



**CONSTRUCTION & CONTRACTING
ESTABLISHMENT**

PROFILE

CR. 4032201914 P. O. Box = 20138

Jeddah Office Tele/Fax: +966 12 7469912

Email: mayar.enma.est@gmail.com

Commercial Registration

٧٠٠٧٠٥٢٣٠٦

الرقم: ٤٠٣٢٢٠١٩١٤

التاريخ: ١٤٣٧/١١/١٨

شهادة تسجيل فرع مؤسسه

وزارة التجارة والاستثمار
Ministry of Commerce and Investment



اسم التاجر: عماد ناصر مبارك الحارثي
رقم السجل المدني / بطاقة الأحوال: ٠٠١١١٥٨٢١٣٩٧
المركز الرئيسي: الطائف الحويه الرميده ٠٠٠٠٠٠٠٠٠٠٠٠
ص.ب: ٠٠٠٠٠٠٠٠ الرمز البريدي: ٠٠٠٠
رقم سجل المركز الرئيسي: ٤٠٣٢١٤٧٣١٦
الاسم التجاري للفرع: مؤسسة ميار إنماء للمقاولات العامة
العنوان: الطائف الحويه الرميده
ص.ب: ٢٠١٣٨ الرمز البريدي: هاتف: ٧٤٦٩٩١٢ فاكس:

النشاط: تركيب معدات الاتصالات وإنشاء واصلاح الطرق والشوارع والارصفة ومستلزمات الطرق وإنشاء واصلاح الجسور والاتفاق وتمديد الانابيب باختلاف انواعها للكهرباء والاتصالات وغيرها وإنشاء واصلاح المحطات والخطوط الرئيسية لتوزيع المياه • تاشيرة بتغيير الاسم التجاري بتاريخ ٢٣-٠٢-١٤٣٨ هـ

رأس المال: ٥٠٠٠٠
اسم المدير أو الوكيل المفوض: عماد ناصر مبارك الحارثي
الجنسية: سعودي
رقم السجل المدني - الإقامة: ٠٠١١١٥٨٢١٣٩٧
سلطات المدير: تاريخه: // مصدره: أحوال نجران
يشهد مكتب السجل التجاري بمدينة الطائف بأنه تم تسجيل هذه المؤسسة بسجل مدينة الطائف
وتنتهي صلاحية الشهادة في ١٤٣٨/١١/١٨ بموجب الإيصال رقم: ١٣٨٤١٧٨ و تاريخ: ١٤٣٧/١١/١٨

مدبر السجل التجاري: نايف صالح الطاسان
التوقيع:



الختم

To Verify the information of this certificate visit <http://v.mci.gov.sa> يمكنك التحقق من صحة هذه الشهادة بالدخول على

Bank Account (Alrajih Bank)

مؤسسة ميار انماء للمقاولات العامه

52600 - الامير متعب - الطائف

رقم العميل: 16935180

ح/ج: 526608010222334

ايبان: SA61 8000 0526 6080 1022 2334

Section -1

Introduction

(Pre-Qualification)

KEY STAFF

STAFF POSITION	NUMBER
C.E.O	01
General Manager	01
Technical Advisor	03
MIS Manager (IT)	02
Accounts Manager	01
Assistant Accountant	02
Engineer (Civil)	08
Engineer (Elec.)	02
Engineer (Mech.)	03
Engineer MIS (IT)	05
Quantity Surveyor	05
Surveyor	05
Site Supervisor	12
Site Forman	09
Skilled Manpower	70
Unskilled Manpower	90

CONTENTS

<u>TITLE</u>	
1	INTRODUCTION
2	SAUDI REGISTRATION CERTIFICATES
3	GENERAL INFORMATION
4	MAYAR ENMA CONSTRUCTION & CONTRACTING ESTABLISHMENT
5	EXPERIENCE RECORD
6	PROJECTS IN HAND
7	PROFILE OF PROJECTS

EARTH WORK & CIVIL CONSTRUCTION **EQUIPMENTS**

S/N	EQUIPMENT DESCRIPTION	NUMBER
1	Dozers -- D-9, Kumatsu 155	05
2	Excavators/Breaker 200-450 (Long	07
3	Shovels D-966 D, E,	08
4	Dump Trucks 16 M ³	16
5	Dump Trucks 32M ³	10
6	Ruler compactors (15-25 tons)	03
7	Roller compactors (5-9 tons)	05
8	Graders R-16	03
9	Asphalt Cutters	02
10	Water Tankers	03
11	Theodolites/Level instrument/Total	02
12	Portable concrete mixers	03
13	JCB	04
14	Bob-Cats	05
15	Trencher/Hougher	02
16	Air Compressor with Jack Hammers	05
17	Heavy Mobiles Cranes (35-55 Tons)	03

ELECTRO-MECHANICAS

S/N	DESCRIPTION	NUMBER
1	Cable Pulling Machine	01
2	Electric Generators 500 KVA	02
3	Electric Generators 50 KVA	02
4	Welding Machines	01
5	Mobile Welding Machines	02
6	Man-Loaders/Lifter	02

MISCELLANEOUS

S/N	DESCRIPTION	NUMBER
1	Costar /Toyota Hiase	05
2	Buses 55 - 70 Seats	03
3	Dyna LD Trucks 3.5 tones	06

INTRODUCTION

We Mayar Enma Construction & Contracting Establishment hereby take opportunity to introduce our Dynamic construction which has Vast Experience & Diverse Expertise is well-known in Civil, Electrical, Mechanical, Earth Works, Manpower & Equipment Supplier based in Jeddah.

Mayar Enma Construction & Contracting Establishment initiated the Construction Works with well qualified & experienced Staff in the field Civil Structures, Civil Designing, Finishing works Architectural, Building Complexes, Industrial Sectors, A/C Mechanical Structures, Sandwich Panels, Warehouse, Electrical Panels with safety Devices, Distribution Boards, Cables Laying, Jointing, Conduits fixation & Sewage Treatment Plants in Jeddah, Yanbu, Madina, Makah, Taif, Shoaiba, Shuqaiq & complete south region. Our main Clients are Multi-National Companies, Public Sectors, Government Depts. SWCC UBT (University of Business & Technology), King Abdullah University, Al-Hayakel Construction, Al-Fareeda Construction, Nesma & Partner Company, J & P Saudi Arabia Civil & Engineering Contractors, HUTA Marine Works Ltd, Al-SAAD Construction Company, Red Sea Gateway Company, Tasdeer Export Zones Group, Al-Majdouie Transport, West Group Holding & Jeddah Islamic Seaport.

The Establishment Is Organized In Nine Main Divisions Namely

- **Earth, Ancillary & Survey Works Division**
- **Civil Structure, Finishing & Waterproofing Division**
- **Water & Wastewater Solution Division**
- **Electrical Cables, Panels, Street Poles Division**
- **Metal Fabrication Fire Fighting & Sandwich Panels Division.**
- **Pipe line Project of MS Steel, H D P E, Fiber & PVC**
- **Security Fences SSD-1, SSD-2 Standard Division**
- **Interior, Exterior, Gypsum Boards Decor, False Ceiling Division**
- **Tele Communication & Information Technology Division.**

These divisions independently & mutually cooperate to execute project in their Respective special System. Mayar Enma Construction & contracting Establishment comes into take over all your above mentioned Problems Our Goal is:-

“TO DECREASE YOURS PROBLEMS & TO INCREASE YOUR PRODUCTIVITY”

Emad Nasser Mubarak Al-Harhi
(GENERAL MANAGER)
MOBILE: 0545455777
Mayar.enma.est@gmail.com

PROGRESSIVE CAPACITY OF ESTABLISHMEN

1. INFRA STRUCTURE, EARTH & ANCILLARY WORKS DIVISION

• SITE PREPARATION & EARTH WORK:-

Cleaning, Grubbing & Removal of vegetation & Strip including necessary Materials to Complete Work.

• SUPPLY MATERIAL OF BACK-FILL AGGREGATE , SUB-, BASE COURSE FOR FINE GRADING:-

Supply material of Back-filling for fine grading for Roads, Utilities corridor & Pads to measures.

• FOR GENERAL FILL (SELECTED AREA):-

General Cut, Fill & Leveling & Supply of Sub-Base, Base-Course, Sand & Gravel.

• CONSTRUCTION RIP-RAP PROTECTION:-

Supply & Execution of Rock Armor & Embedded Boulders of any Size for Rip-Rap.

• DEEP EXCAVATION / TRENCHING:-

Deep Excavation up to 7 M & any length in liner meter & Cart away excess Material from SITE.

• ASPHALT, PAVEMENTS & CURVE STONE WORKS:-

Construction of Access Roads, Bitumen Asphalt Roads as per required Layers & Specification.

For pavements construction of Concrete slabs, Inter-Lock & fixation of Curve Stones with material.

• DRILLING RIGET DEEP EXCAVATION UP TO 300 LM:-

Supply & Execution of Drill Rig 14" Diameter for Water Well Filling System & installation of **12" Water Resistance Stainless Steel Casing**. Supply & Execution of Drill Rig 14" Dia for Water Well Filling System & installation of **12" Water Resistance PVC Casing**. Grouting, Fine Rock pieces Elimination, Water Bearing Sand Process & Well intake Removal of Mud with Submersible Pump. Supply & Installation of 3" Hose Pipe, **Italian Brand 15 HP** Section Pump with all Required Set. It will Provide **Water 50 Gallons /Minute**.

2. CIVIL STRUCTURE & FINISHING WORKS DIVISION

• CIVIL STRUCTURE WORK:-

Form work as Shuttering Carpentry, Bar-Bending, Steel Fixation, Alignment, Concrete Pouring with Vibrator for Buildings, Warehouses, and Boundary Walls & Concrete Safety Barriers. Structure Work of any substantial magnitude is always our First priority to show our Work efficiency & field Work-Man Force performance.

• BLOCK & PLASTER WORK:-

Supply & Installation of Red Blocks & Cement Blocks including Reinforcement, joint mortar. Concrete/mortar in-filling bonding. Opening, Expansion joints. Sealant, Horizontal & Vertical Anchor Bars, Sills, Pilaster, Bond Beam, Lintel Beam & all Materials. Supply & Installation of Mortar rendering finish for wall consisting of brown & finish Coat including preparation of Surface & Base treatment.

• SAND BLASTING, PAINTING & GYPSUM BOARD WORKS:-

Sand Blasting, Shot Blasting, Sand Cleaning, Supply & Apply Zinc Ethyl Silicate for Steel Structure Pipes, Supports Primer & Shop primer by DimocoteSp 210, Jotun Muki-Z-2001-FW Coats, Putty, wearing Coat & final Coat with Spray Painting, Gypsum Board, and Armstrong Fall-Ceiling Works.

• CERAMIC TILES & MARBLE WORK:-

Supply & Installation of all types & Sizes of Floor & wall Ceramic Tiles, Porcelain Tiles, Skirting Tiles, Arctic Stones & Marbles with Geometrically & Mechanically System.

3. ELECTRICAL WORKS DIVISION

• INDUSTRIAL ELECTRICAL WORK:-

Grounding, Earth Chamber, Earth Rod, Cables XLPE/ PVC in Conduit Lying, External Distribution, Cable Trays, Small Power & ELVA, Lighting, Wiring, Amps TPN Distribution Boards, Panel Boards, Switch Board & Sub-Circuits.

• TELEPHONE & DATA SYSTEM:-

MDF, Cable, Junction Boxes, Tele/DATA Point, PABX Complete, Public Address System, MATV & Fire Alarm System.

• ELECTRICAL & INSTRUMENTATION:-

Control & Pressure Safety Valve & other Instruments Servicing & Repairing. Maintenance, Overhauling, Fault/Trouble Shooting of various kinds of Pressure Safety & Control Valves.

• ELECTRICAL TESTING EQUIPMENTS:-

- ❖ DC Hi Pot Testing Set up 70 KVDC Biddle USA AVO
- ❖ Primary Injection Test up to 2500 A- ODEN.
- ❖ Secondary Injection Set SR—98 AVO USA.
- ❖ Meager BM21 5Kv.
- ❖ Flunk MultiMate.
- ❖ Double Calvin Bridge (Yokogawa—Japan)
- ❖ Three Phase Tester & Turn Ratio Tester Biddle AVO – USA.
- ❖ Triple Device For IP35 Relays (group Schilinder Package – Triple Relay S.S)
- ❖ Clamp Meter AVO—USA.
- ❖ OIL Dielectrics testing AVO – USA, AVO Foster –England. .
- ❖ Under Ground Cable /Pipe Tracer.

4. MECHANICAL WORKS DIVISION

Designing, Supply, Fabrication, Erection Structural Steel, Platforms, Heat Exchangers, including Grouting, field Connection with high Strength Bolts or Welding, Painting & Generators Installation. Supply & Installation of FRP Corrugated Cover including Fixing Screws, Flashing, Skirting, End Closures, Joint Gaskets Fasteners, Comer Trip, Parapet Caps, Openings, Sealing & Caulking. Complying of Stainless Screw with ASTM A240 Type316L.

• WAREHOUSE, TANKS & HANGERS:-

Fabrication & Erection of Warehouse, Steel Tanks, Hangers, Sandwich panels & Sliding Gates. All the tanks & non-Pressure Vessels in Low & high Carbon Steel as well as Stainless Steels are fabricated to API 650 Standards Pressure Vessels are fabricated to Section VIII of the ASME Code (P/Vessels).

• STORAGE TANKS:-

All Verities Of Material Types & Diameters, C/W All Their Appurtenances Such As Heating Coils, Man ways, Nozzles Ladders, Hot Air/Gas Ducting, Flues, Pre-Fabrication Of Pipes & Elbows. Varity Of Structure Steel Fabrications, Gantries, Staircases, Bridges Work, Platforms, Towers, Support Steel Clarifiers, Navigations Buoys, Moulds For Concrete Walls Etc.

• WATER SUPPLY & SWAGE SYSTEM:-

Water Supply System & Execution of MS Steel, HOPE, CPVC & PVC Pipes, Fittings with Rubber, Solvent & Electro-Fusion Joints System. Domestic & Centrifugal Water Booster Pumps, and Lifting Pumps installation. Valves, Drainage, Manholes, Sanitary Fixtures, Water Tanks. Pipe Lines, Steel Structure, Warehouses, Tanks, Hangers, Sandwich Panels, Channels.

• **AUTOMATION:-**

Omran, Allen Bradley, Plc System Repairing, Maintenance, Transmit Ion & Overhauling of All Type of Diesel & Patrol Vehicles & Heavy Equipment Tasks. Specialized in Field of Heavy Generators Maintenance & Overhauling. Under floor Automation System for Hinged Gates Installation with Accessories Control Panel, Safety Photocell, Self Locking, Waterproofing, Electro Mechanical with Emergency Battery Mechanism & Extremely Silent Movement to the Gate with Gear Motor. The Guard Series of **Road Barriers** with Complete Line of Systems for Industrial Use on Passageways from 4m To12m Wide. Barriers Require only 2 Seconds to open, thus Providing Rapid Access Convenient & Sturdy System. **Heavy Duty Sliding Gates** are Highly Innovated Designed Features & Functions. These are Built to Meet the Diverse Joints System Requirements of a Wide Range Gates Used in Condominium & for Industrial Purposes with Wings Weighing 12-22 Quintals. Automatic System for Powering Large Powering Roller Shutters, Sliding Doors, Folding Doors, Sectional Doors, Sash Doors, Visits Window, Vertical Shutters & Rotating Pole Shutters with Built in Inertia Limiter, Built in Limit Switch Units & Compact Dimensions External.

• **AIR-CONDITIONING:-**

All Type of Window, Split & Chillers up to 450 tons Capacity Units Installation, Repairing, Installation, Overhauling & Fabrication of Cold Room, Display Coolers, Replacement, Relocation, Renovation & Contract of 290 Tons, 320 Tons 611 Tons Chiller Units & HAVC Works.

• **ALUMINUM & GLASS WORKS:-**

Aluminum Security High Profiled Doors, Windows, Kitchens Cabinets & Shelves, Strips Fabrication.

• **ALUMINUM, AUTOMATIC & STANDARD SAFETY DOOR SYSTEM:-**

Aluminum Safety Doors Fabrication & Installation of Dia-Cast Strong, Powerful, compactable, Self Locking, Key release mechanism, Gear Motor, Speed adjustment, Radio remote Control & deceleration adjustment in opening and closure.

• **PORTABLE CABINS FABRICATION:-**

Erection of Portable Cabins Mechanical Structure with H-Beams & Leap Channels. Walls & Ceilings' are prefabricated with Water & Fire Proof Marine Plywood, Water Supply System, Sanitary Work, kitchens Appliances' Aluminum Cabinets & Electrical Works 500M² – 1000 M² Area.

• **SECURITY FENCES STANDARD SSD1 & SSD2:-**

Fabrication of various standards of Saudi Security Directive SS1, SS2, Seashore Fencings. The Accessories used Concrete Pole Posts, PVC Coated Poles; Chain Links & Epoxy Coated Galvanized Poles. Bracing System is applicable with the Accessories Stretcher Bar , Truss Rod, Short Winder, Brace End Cap & Sleeve Connector (for top Rail).Stud System has the Accessories of Turn Buckle, EYEBOLTS, U-Connector, and Angle Cleat & Dropper Bar Clip.

• **ISOMETRIC PARKINGSHED HDPE NET CLOTH FABRICATION WORK**

Fixation of 150 X 150 X 4mm Tubes Posts. Installation of 2" Pipe*2mm Frames with Cross Brest & Accessories. Fixation of Parking Shed HDPE Net Cloth Size 6X5M for 02 Car Area 1764 M².All Works With Material is Guaranteed for 10 Years.

MAYAR ENMA CONSTRUCTION & CONTRACTING COMPANY LTD THROUGH OUT YEARS

Keeping in the view of the Vast Experience, Diverse Expertise, Super Financial Resources, Supply of Field Work Manpower & Heavy Equipment. We successfully completed all the awarded projects with full confidence & adequate time.

Our Establishment is capable & confident to undertake any above mentioned division's Project of substantial magnitude. During the Period **Mayar Enma Construction & Contracting Establishment** Completed Several Mega Projects with Professional, Experienced, devoted work-force Management. Aramco, Fuchs, Crystal, Lubref, Lubrizol Petroleum, Sallaco, ACT & other Petro Lubricant Industries are our Best Clients. We Performed Great Jobs in Housing Projects for Electrical & Pipe lines Network. We are moving forward towards Betterment & the Best future. Our former Projects are as following:

EARTH, CIVIL, ELECT, MACHE, EQUIPMENTS & MANPOWER SUPPLY

PROJECT DESCRIPTIONS	WORKS	YEAR
Yanbu Cement Plant Extension	Earth Work, Material, Water & Manpower Supply	2005
Yanbu Cement Plant Housing Project	Earth, Civil, Finish work. Equipment & Manpower Supply	2005
Aramco Building Project Yanbu Hussaini Co	Water Proofing, Mechanical Structures, Manpower & Equipment Supply	2005
Aramco House Maintenance Project by Al-Hammad Yanbu	Electrical, Mechanical Appliances, Water Proofing & Repair Finishing Work	2006
Aramco Electrical, Conduits, transformer Maintenance Project	Cables lying, Conduits Repair, Manpower & Back-fill & Fertile Soil Supply	2006
Royal Commission Project Jerboa Co	Earth, Stone Pitching, Rib- Rap & Ancillary Work.	2006
Yanked Housing Project 200 Villas	Water Proofing Back-Fill, Compaction & Finish Works.	2006
Fuchs Petroleum Co Yanbu	Civil, Elect Panels, Street polls. Aluminum & Mechanical	2007
Crystal Titanium Oxide Co Yanbu	Earth & Finishing, Boundary Walls Work	2007
Anwar-Ul-Madina Hotel Madina	Equipment's, Manpower Supply & Finishing Works.	2007
Al Hot air (16 Stories) Hotel Madina	Manpower, Equipment's Supply, Finish & Asphalt Works	2008
Taiba Construction Co Madina	Excavation 07 Meter Deep, Compaction, Water Proofing	2008
Islamic University Library Madina	Demolition of Ex-Structure Excavation & Manpower Supply	2008
Government Boys High School 4 Nos	Excavation, Civil Stature Manpower & Boundary Wall.	2009
Al-Hiram Al-Malawi Mosque's Stores	Excavate, Civil, Finish, Roads Construction & Asphaltting	2009
Royal Commission Yanbu Water	Construction of Manholes & Water Proofing.	2009
S.W.C.C Saudi Raymond CO Jeddah	Earth Level, Beams Const, Access Roads, Utility Pad. &	2009
Youssef Bin Ahmad Kanoo Yanbu	Earth, Civil, Electrical & Mechanical Work.	2010
SABIC Co Yanbu.	Steel Pipe Rack Erection Work.	2010
Power Plant Madina Munawerah.	Fabrication, Installation, Erection & Painting of Diesel Tank.	2010
Jotun Paint Lobby Extension & Decoration	Elect Cable Laying, Panels, DB & Finishing Works	2010
Bemco Walkway with Mech/Shed	Back-Fill, Compaction Inter-lock Walkway, Steel Works.	2010
Bemco Tower Installation, Fabrication	Excavation, Back-Fill, Compaction, Civil & Mech Structure Painting Works.	2011

Project Descriptions	Works	Year
Finance Ministry Office Yanbu Work	Earth, Civil, Tiles, M/C Marbles, Granite, & Painting	2011
Rashid Bakery Production Hall Ext.	Civil, Electrical & Finish Works.	2011
Arabian Shipping Co Jeddah	Security Fences Safety Barrier & Boundary Wall	2012
Al-Tumaimi Const& Contracting	King Khalid Hospital Earth Work & Road Construction with Supply & Apply of Sub-Base & Asphalt Work.	2012
SECECO(AURO-ASIA End User) Jeddah	Installation of Transformer & Switch gear & Overhauling of Transformer	2012
ABB (End User S.W.C.C Jeddah)	Installation of 160 MKV Transformers.	2012
Mize Electro-Mechanical WKSP Jeddah.	Installation of HVAC System Capacity 60 Tons, Compressors, Auto Electric System Security Gate, Pressurized Air System for Pneumatic Equipment Operation & PBX Telephone, Paging System & Sound System.	2013
Al- MARRAEI Co CPP-2 Glycol Jeddah.	Installed 5 Air Compressors 733 KV capacity, 4 Air Compressors 65 KV capacity & pipeline System for Cold Storage.	2013
AI-AMER Hotel Makah.	Installed Fire Fighting, Fire Alarm, PBX Tele, Paging, Sound & TV System.	2013
SADAF CO Office Build Extension Project.	Civil, HVAC, Gypsum Board Partitions, Tiles, Paint & Finishing Works.	2014
Rashid Bakery Mechanical Storage Jeddah.	Civil Structure, Mechanical Structure & Sheds Gliding& Painting Works.	2014
SADAFCO New Steel Hanger Warehouse.	Excavation, Back-Fill, Boundary Wall & Mechanical Structure with painting Works.	2014 2015
Majduie Transportation Company	Earth, Ancillary, Asphalting, Sewerage System, Supply Execute Electrical Cable with Cable Trenches, Supply& Execution of SSD-1 Standard Chain Link Fences.	2014 2015
BATCO Electro& Fiber Optic Work	Supply & Apply Fiber Optic Cable With Splicing Work With ODTR Reports & Commissioning	
NESMA & PARTNER COMPAMY	Asphalting , Earth & Ancillary Work for Parking & Road	2015
HUTA MARINE CO KING ABDULLAH Harbor Project	Supply & Delivery of Gravel Bedding(Crush Stone) to For Quar wall Foundation Grave	2015
J & P CIVIL ENGINEERING Co. Housing Project	Civil Structural Works for Housing project	2014 2015
AL-SAAD CONSTRUCTION Co. Jeddah Tower Projects.	Finishing Works of Masonry Block Work, Plastering, Ceramic Tiles & Painting works.	2014 2015
Majduie Re-Export Petro-Chemical Company JIP Yard Jeddah.	Work in Progress of SSD Chain Link Fence, Portable Cabins Mobilization, Re-Fabrication & Installation.	2016

4.1 WATER & WASTEWATER SOLUTIONS DIVISION

INTRODUCTION:-

Water and Wastewater Solutions (WWS) division was established in April 2005 with Sister Company of **Riyadh Al-Harhi Construction & Contracting Establishment** is an Electro-Mechanical Contracting Division with a team of specialized staff in the field of environmental pollution control. One of its strength is the experienced staff in process design, supply, testing and commissioning of water, wastewater and in industrial wastewater treatment plants. The staff also specializes in quality operation and maintenance of treatment plants.

SERVICES OFFERED

WWS SERVICE OFFERINGS INCLUDE:

1. The quality preventive maintenance (PM) is a cost effective service for water, wastewater treatment plants. **WWS** can cover other electro-mechanical items on the site in one package.
2. Process designing, supply, installation, testing and commissioning of water, wastewater and industrial wastewater treatment plants.

PREVENTIVE MAINTENANCE

WWS quality maintenance would help maintain the Clients' assets and also provide the design capacity & quality of the output in a cost effective manner. The **PM** would also improve the reliability and performance of the equipment. By signing the preventive maintenance contract, the Client would receive the following benefits:

1. Reduction in Emergency repair,
2. Reduction in unexpected equipment down time and sub sequential cost,
3. Reduction in process upsets,
4. Extended equipment life,
5. Optimized cost of operation and maintenance by right chemical dose & protecting equipment
6. Safer facility for plant personnel,
7. Better budget preparation.
8. Professional plant operation training for the operators.

WWS prepares a computerized maintenance management system (CMMS) for large plants, keeps track of scheduled maintenance work for each unit within the contract. Each equipment would be tagged (if not done earlier) and **WWS** qualified technicians would perform routine maintenance work, to provide benefits as listed. The samples of routine maintenance charts for motors, pumps, and other equipment are available on request. Apart from providing **PM** services, **WWS** can supply Chemicals, Consumables and required spare parts for the treatment plant. A range of preventive maintenance packages are available to suit the Client's needs based on bi-weekly, weekly, and fortnightly visits, with or without supply of consumables. **WWS** staff keeps the Client fully updated during maintenance program.

SUPPLY, INSTALLATION, TESTING & COMMISSIONING OF TREATMENT PLANTS

WWS services include supply of new treatment plants or refurbishment on partnership basis with the Clients. WWS takes Responsibility for process Design, Equipment selection and sourcing. After Receiving Equipment, WWS takes responsibility to install, test and commission the complete system to meet the agreed performance. WWS can provide a complete project budget for Client's approval and a fee for WWS services can be agreed upon.

THE WATER TREATMENT SYSTEMS

WATER TREATMENT:

Includes SWRO, BWRO, filtration and softener plants.

WASTEWATER TREATMENT:

The wastewater plants include a conventional activated sludge, sequential batch reactor (SBR); grey water treatment plants and lifts stations.

INDUSTRIAL WASTE TREATMENT:

WWS can help to recycle the treated water for irrigation or process use, after oil & grease separators, physio-chemical / biological treatment and filtration.

FIRE FIGHTING / BOOSTER SETS:

WWS can provide pumps and instrumentations for firefighting, booster sets and other equipment in the plant.

ODOR CONTROL:

It is important to control the odor from the wastewater treatment plants and WWS can provide a cost effective equipment solution.

WATER & WASTEWATER SAMPLE COLLECTION AND ANALYSIS:

WWS can arrange to collect samples for analysis by an independent third party laboratory in Jeddah. For your preventive maintenance and water and wastewater treatment equipment / package requirement, please contact WWS.

4.2 METAL FABRICATION WORKS DIVISION

Metal Fabrication Division was formed in Association with Alaien Industrial Area in 2005. This division consists of experienced fabricators, Welders & designers to fabricate from a Small Metal support to Steel Hanger. The major activities in the workshop are as follows.

- Aluminum fabrication works
- Steel fabrication
- Stainless steel fabrication

There is a specialized installation crew to install the above fabricated items on site to provide a complete turnkey project to client.

4.3 ELECTRO-MECHANICAL DIVISION

Electro-Mechanical division **Mayar Enma Construction & Contracting Establishment** was Established in 2005 with a Specialized Team of over 10 years experience in Electro-Mechanical works. This E & M division Provides supply and installation of Electro-Mechanical Equipment and maintenance to the clients in the Kingdom.

SUPPORTING EQUIPMENTS

Our professional staff in the mechanical division has hands on experience in dealing with the following equipment's:

- Diesel engines used in (boats, power generator, vehicles)
- Electrical/Mechanical compressor used in (central AC system, boring machines and industrial equipment)
- Hydraulic
- Turbines

SERVICES OFFERED

- Supply of new / used Electro-Mechanical Equipment
- Insulation of new Equipment
- Repairing and testing of old parts

MAJOR PROJECTS COMPLETED

5.1 RESIDENTIAL & COMMERCIAL

Projects	Description of work	Year
Bethha Quraish Housing Plotting Hada Road Makah	Surveying, Road, Street, lights, Sewerage system	2005
Drinking water Cooling system MUNA Makkah (Under Prince Metab Bin Abdul Aziz)	Operation & Maintenance During HAJJ period	2006
Sheikh Abdul Malik Bin Daish Palace Aziza Makah	Complete Finishing Works of Ceramic Tiles, Marble & Painting Works.	2007
Al-Najma Building Multi Story Al Jameza Makah	Electro- Mechanical of A/Package & Finishing Works.	2008
Emara Al Ahmd Multi Story Building Azizia, Makah	Complete Structural Electro- Mechanical & Finishing	2009
Jama Mosque Halima Zanklani Sharaya Makah Hotel Basherheal Phase- 2 Makah	Complete Structural works of Electro- Mechanical with Painting, Finishing Work.	2008
Villa R. Major General Abdul Khaliq Sirajudin. New Rusaifa Makah	Complete Construction Structural work, Electrical, Mechanical & Finishing Work	2010
Hospital of Mabda Makah	Complete Maintenance works	2001
Damam Stadium General Presidency for youth welfare Under Al Taif Co. Ltd.	RC Structures works for Crowd barrier foundation & UG Water Tanks	2011
Extension of High School Sehtulslam Makah	Complete Construction Structural work, Electrical, Mechanical & Finishing Work	2012
Jeddah Tower Electrical Works	Installation of HVAC System Capacity 280 Tons including Fresh Air System, Substation & Plant Control Panels	2012
Sulaimania Villas Jeddah.	HAVC System & Electro- Mechanical System Installation & 2 years of Maintenance Contract.	2013
SEC (Saudi Electric Company Jeddah	Unified Contract for Distribution System in 3 Regions, Central, Western & Southern.	2013
Weir Technical (End User KINDASA)	Installation of 12 MVA (2 Nos), 2MVA (2 Nos) 380V Transformers, 13.8 Kv, 6.6 KV switch Gear & Variable Speed Control Panel for 2MW Motors (6 Nos)	2014
Al-Nahda Pharmacies Jeddah & Makah	Maintenance Contract of HVAC & Electro-Mechanical System of 185 Branches.	2014
FURQAN Mosque	Maintenance 2 Year Contract of HVAC	2015

5.2 WAREHOUSE & INDUSTRIAL

Projects	Description of work	Year
Villas Dr Khalid Mohammed Dr, Sheikh Mohammed Betha Quraish Hada Road	Completed Super Structural work, Electrical, Mechanical & Finishing Work	2005
Housing Complex Sheik Omer Sirajudin Husainia Makah	Completed Infera & Super Structural work, Electrical, Mechanical & Finishing Work	2006
Extension of Petrol Pump Centre Al-Mehrokaate Kuday Road Makah	Complete Construction Structural work, Electrical, Mechanical & Finishing Works	2006
A) AL-Baik Sharafi Mall	Civil works, false ceiling plumbing, lighting works	2007
Al Baik Sultan Mall	Civil works, plumbing, false ceiling, block, plaster, lighting, metal works and mezzanine structure	2007
Al Baik Sawari Mall	Civil works, false ceiling plumbing, lighting works	2008
Chinese Fast Food Restaurant No. 1 ,Food Court, Sultan Mall, Jeddah	All disciplines except kitchen equipment's Turnkey Project	2008
Princes Sara main villa & mosque	Marble and GRC work	2009
Kudu Restaurant, Arabian (40) Street Jeddah	Refurbishing elevations with Aluminum composite Panel Claddings	2009
Chinese Fast Food Restaurant No.2 .Food Court, Sultan Mall, Jeddah	All disciplines except kitchen equipment's (Turnkey Project)	2010
Al Baik, Food Court Jamia Mall Jeddah	Civil works, plumbing, false ceiling, block, plaster, lighting, metal works and mezzanine structure	2011
Restaurant in King Abdul Aziz Medical	Two Story Building (turn Key Project)	2011
Mada Woven Factory, Jubail	Air conditioning, Electrical & plumbing works	2012
IKEA Tahlia Road -Jeddah	Supply and Installation of Potable Water level Indication System and Electro Mechanical Flow meter	2012
Shekh Hatim Abu Jinada, sewage treatment	Renovation of STP and addition of chlorination system	2013
AI-Shallal Theme Park, Cornish Jeddah. Baker Leisure Group - Middle East	Installation, testing and commissioning of 310 m3/d seawater RO, 50 m3/d brackish water RO and 400 M ³ /d sewage treatment plants	2014
Yousef Ahmad Kanoo Construction Co.	3 Years contract for Complete Civil, Construction Structural work, Electrical, Mechanical & Finishing Works	2015

5.3 WATER & WASTEWATER TREATMENT

Projects	Description of work	Year
Warehouse building in Industrial Jed	Civil works, steel hanger Electromechanical works.	2005
Safolla Edible Oil Co. Industrial Jed	Civil work for main diesel storage tanks	2006
Reza Hygiene, Warehouse city Jed	Civil works including construction of new. 500M ² (approx.) production area, metal partitioning.	2006
Oil Tanker's Basement Work	Oil Tanker's Basement Concrete work project. SECECO, Medina	2007
Bridges and Culverts Work	AI-Wajh Road Project (Bridges and culverts) AL-Harbi Construction & Trading Co. (Ltd)	2007
China Harbor Construction Co Yanbu	Earth, Gazebo Construction, Stamp Concrete, Rip-Rap, Curb Stone & Cement Tiles Work.	2008
APSCO Jeddah	Civil Structure & Electro- Mechanical Works	2009
Ministry of Water & Power.	3 years Network of Sewerage Line in Hail District(onward)	2009
China Railway Makah	Deep Excavation 16 m, Cap beam, Construction of Bridge Slab	2010
S.W.C.C Yanbu	Mitsubishi Rotary Pre- Heater Works.	2011
SECECO Rabigh	Replacement Expiations Joints	2012
SECECO Medina	Turbine parts Cleaning, Painting & Repairing,	2012
APSCO AL-HASSA Airport	Civil Structure & Electro- Mechanical Works	2013
SECECO Medina	Construction of Power Plant Room in King Palace Makah Mukerma.	2014
NESMA & PARTNER CONSTRUCTION COMPANY	200 M Deep Drilling for Water 14" with 12" Casing & Installation of Pump.	2014
NESMA & PARTNER CONSTRUCTION COMPANY	Supply & Execution of Sweet Sand for Elec. Cables	2015
RED SEA GATEWAY COMPANY	Replacement 12" PVC 1.5 Km Sewerage Lines with Construction of Manholes Size .80X.80X1.2M*22	2015
NESMA & PARTNER CONSTRUCTION COMPANY JEDDAH PROJECT	Supply & Apply Sub-Base, Base Course & Bitumen Asphalt done in the Main Office, Site Office & Hospital Main Link Roads. Still Working for Asphalt	2015
NESMA & PARTNER CONSTRUCTION COMPANY KAUST TUWAL PROJECT	Supply & Execution of Bitumen Asphalt & Road Marking Work done at KAUST Housing Project in the Site & Consultant Offices.	2015
NESMA & PARTNER TUWAL PROJECT	Work in Progress for Civil, Earth, Ancillary & Asphalt. Supply Of Sub-Base & Aggregates.	2016

5.4 EARTH & ROAD BITUMINOUS ASPHALT WORKS

Project Descriptions	Works	Year
Yanbu Cement Plant Extension	Earth, Ancillary & Bituminous Asphalt Works.	2005
Royal Commission Project Asia Jerboa	Earth, Rib- Rap & Ancillary Work.	2005
Fuchs Petroleum Co Yanbu	Earth, Bituminous Asphalt & Street polls	2006
Al Hotair Hotel Medina	Earth & Bituminous Asphalt Works	2006
Taiba Construction Co Medina	Excavation 07 Meter Deep, Compaction Access & Link Roads Bituminous Asphalt Works.	2007
Islamic University Library Madina	Earth & Bituminous Asphalt Works	2007
Anwar-Ul-Medina Hotel Medina	Excavate, Earth & Bituminous Asphalt Works	2008
Al-Haram Al-Mabawi Mosque's Stores	Roads & Road's Bituminous Asphalting	2008
Royal Commission Yanbu Zomco	Access Roads, Utility Pad Works.	2009
S.W.C.C S	Earth Level, Beams Const, Bituminous Asphalt Works.	2009
Yousef Bin Ahmad Kanoo Yanbu	Earth, Ancillary, Streets & Bituminous Asphalt Work.	2010
Bemco Walkway with Mechanical Shed	Back-fill, Compaction Inter-lock Walkway & Bituminous Asphalting Works.	2010
Arabian Shipping Co Jeddah	Security Fences Safety Barrier & Boundary Wall	2010
Tumaimi Construction & Contracting Co	King Khalid Hospital Earth Work & Road's	2011
Kirby Kuwait Mechanical Co	Earth & Bituminous Asphalting Work	2011
China Harbor Co Jeddah	Earth, Stone Pitching, Rib-Rab & Bituminous Asphalting Work	2011
Yousef Bin Ahmad Kanoo MYC	Earth, Ancillary & Bituminous Asphalting Work	2012
Jeddah Islamic Port Authority	Earth, Ancillary, Bituminous Asphalting Work Street Poles & Duck- Banks	2012
National Water Co Jeddah	Earth, Ancillary, Bituminous Asphalting Work & Plant Installation Jeddah & Riyadh.	2012
Jeddah Islamic Port Tusdeer Group	Earth, Ancillary, Bituminous Asphalting Works & Still Working	2013
Jeddah Islamic Port Al-Majdoi Group	Civil, Earth, Ancillary, Bituminous Asphalting Works & Still Working & Still Working	2013
Jeddah Islamic Port Red Sea Group	Earth, Ancillary, Bituminous Asphalting Works & Still Working	2014
Jeddah Islamic Port Red Sea Group	Earth, Ancillary, Street Lights & Bituminous Asphalting Works & Still Working.	2014
Oil Tanker's Basement Work	Oil Tanker's Basement Concrete Work Project.	2015

PROJECTS WITH STC & CHINESE COMPANIES

Project	Works	Year
Synopack Company Yanseb Project	Earth Work, Construction of Manholes, Fiber Optic Cable Lying & Splicing & Manpower Supply	2005-2008
China Harbor Yanbu	Earth, Construction of Manholes, Supply Sub-Base	2006-2012
China Railway CRCC	Deep Excavation, Fiber Optic Cable Lying & Splicing,	2009-2013
China Harbor Jeddah	Crush Stones, Equipment Supply & Rib-Rab	2010-2013
NESMA Co (KAUST Aramco Project)	Supply, Execution of Fiber Optic Cables Lying Splicing & Manholes Repairing.	2012-2014
STC Fiber Optic Cable Splicing Jeddah	Excavation, Back-Fill, Spacers, Conduits, Milling, Cable Pulling, Splicing & Re-Asphalting Works.	2012-2015
Zain Satellite Saudi Arabia	Supply Execution of Power & Fiber Optic Cable Laying & Splicing. Excavation, Back-Fill, Spacers, Conduits, Milling, Cable Pulling, Splicing & Re-Asphalting Work	2011-2015

MOI WESTREN REGION PROJECTS

Project	Works	Year
BATCO MAKKAH PROJECT	MOI Communication Tower Erection. Trenches Excavation in Mountain Area. Civil Works, Installation of Mechanical Structure. Supply & Installation of Fiber Optic & Power Cables. Supply & Deploy of Sand, Backfill, Sub-Base & Asphalting.	2012
BATCO JEDDAH PROJECT	MOI Communication Tower Erection. Trenches Deep Excavations. Civil Works, Installation of Mechanical Structure. Supply & Installation of Fiber Optic & Power Cables. Supply & Deploy of Sand, Backfill, Sub-Base & Asphalting.	2014
BATCO DURRATUL URUS PROJECT	MOI Communication Tower Erection. Trenches Deep Excavations. Civil Works, Installation of Mechanical Structure. Supply & Installation of Fiber Optic & Power Cables. Supply & Deploy of Sand, Backfill, Sub-Base & Asphalting.	2014
BATCO TAIF PROJECT	MOI Communication Tower Erection. Trenches Excavation in Mountain Area. Civil Works, Installation of Mechanical Structure. Supply & Installation of Fiber Optic & Power Cables. Supply & Deploy of Sand, Backfill, Sub-Base & Asphalting.	2015

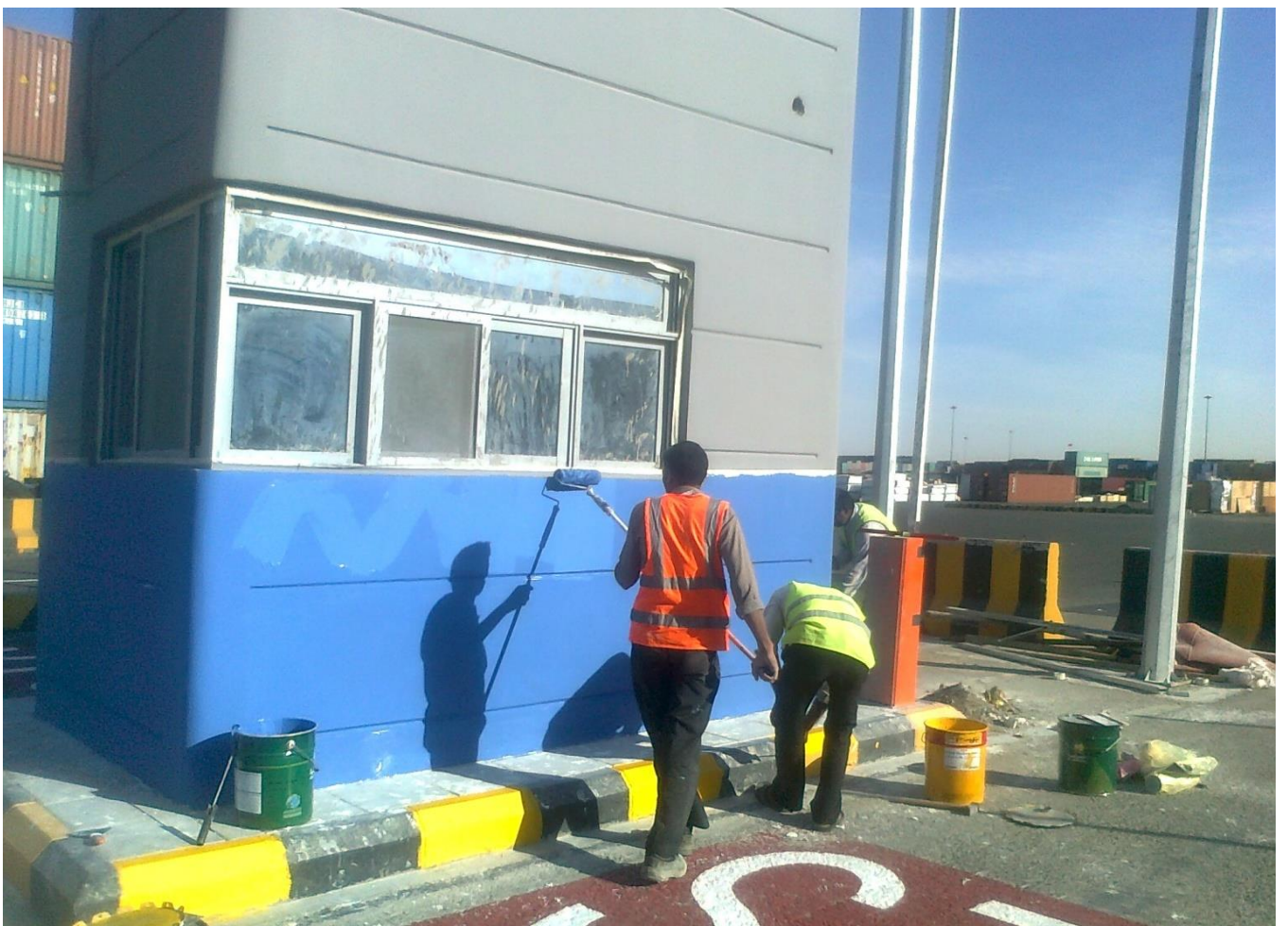
JEDDAH ISLAMIC PORT'S PROJECT

Project	Descriptions Works	Year
<u>Terminal- 1 (Kanoo Yard)</u> RED SEA Gateway Terminal, Logistic Support Services Jeddah Islamic Port.	1- Construction of Complete Dining Hall Area 650 M ² .All Civil, Electrical Mechanical & Finishing Works Like Block, Plastering, Painting, Ceramic Tiles & Marble Works. 2- Construction of RCC(03) Complete Guard Rooms for Road Check Points to Assimilate the Containers. 3- Construction, Installation & Repairing of S.S.D Standard Chain Link Fence with Barbed & Concertina Wires. 4-Fabrication & Installation of Heavy Duty Guard Railings Footboard Stair 5-Supply & Execution of Power Cable 450LM from main D/B-Generator 6- Supply & Installation of Road Safety 4M, 6M Barrier. 7- Supply & Casting of Wooden/Aluminum Doors & Window 8-Supply & Installation of Different Verities of Portable Cabin	2012 2013
<u>Terminal- 2 (Birth Yard)</u> RED SEA Gateway Terminal, Logistics & Support Services Jeddah Islamic Port.	1-Construction & Fabrication of 02 Ware Houses with Installation of 8M Sliding Doors, Heavy Duty Exhaust Fans, Fire Fighting System, Hydrant & Concrete Flooring. 2- Earth, Ancillary, Back-Fill, Compaction & Bituminous Asphaltting work 70,000 M ² . 3- Construction & Installation of Foundation Base Slabs of High Mast 30M & Street Light poles 15 M with Cable Laying, Cement Tiles & Curb Stone Work. 4- Construction & Installation of Railing Protection Safety Post. 5- Construction of Gypsum & Cement Board Office Rooms, Panel Protection Cabins, Fireproof Armstrong Fall Ceiling with Complete Accessories of Main Server Room.	2012 2013
TASDEER BONDED & RE-EXPORT ZONECO.	1- Construction of Ware House Partitions. Block, Plaster & Painting 2- Construction of Gypsum & Cement Board Room Partitions, Fireproof Armstrong Fall Ceiling with Complete Accessories. 3- Supply & Casting of Wooden/Aluminum Doors & Windows. 4- Construction, Installation & Repairing of S.S.D Standard Chain Link Fence 600LM with Barbed & Concertina Wires. 5-Earth, Ancillary, Back-Fill, Compaction & Bituminous Asphaltting	2013 2014 2015
AL MAJDOI TRANSPORT CO	1- Construction &Installation of S.S.D Standard Chain Link Fence with Barbed & Concertina Wires. 2- Construction & Installation of Footing, Columns, Litent& Boundary Wall Pre- Caste Panels. 3- Supply & Installation of H.D.P.E. Water Supply Pipe. 4- Supply & Casting of Wooden/Aluminum Doors & Windows. 5-Supply, Execution & Splicing of Fiber Optic Cables. 6-Supply, Execution Bituminous Asphaltting for all Link Roads.	2013 2014 2015
AL MAJDOI TRANSPORT CO	Supply & Apply Sub-Base, Base Course & Bitumen Asphalt in the Main Office, Main Link Road Marking.	2015
AL MAJDOI Petro Chemical Re Export	Working SSD Chain Link Fence Works. in Progress of Portable Cabins Mobilization, Re-Fabrication & Asphaltting	2016

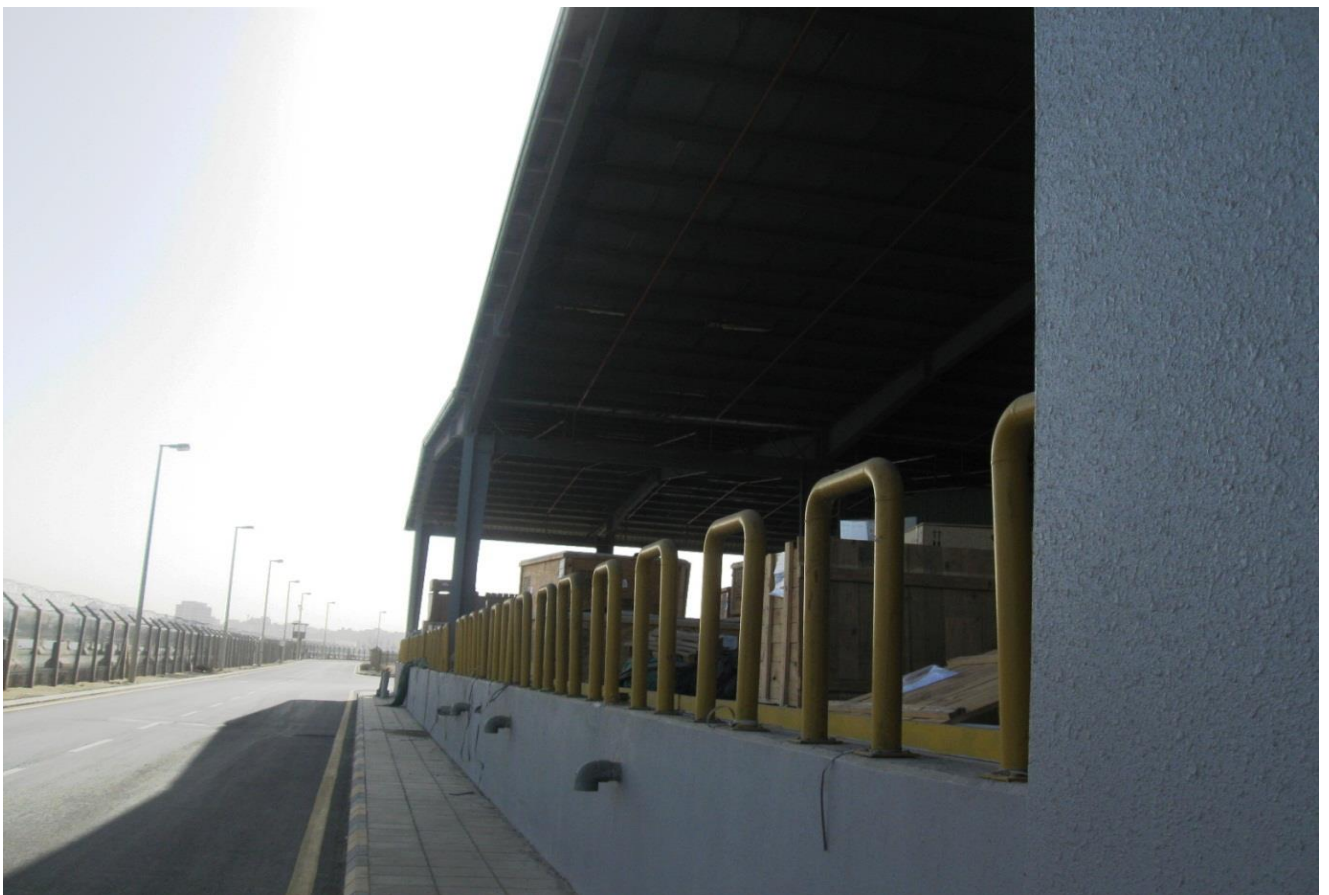


















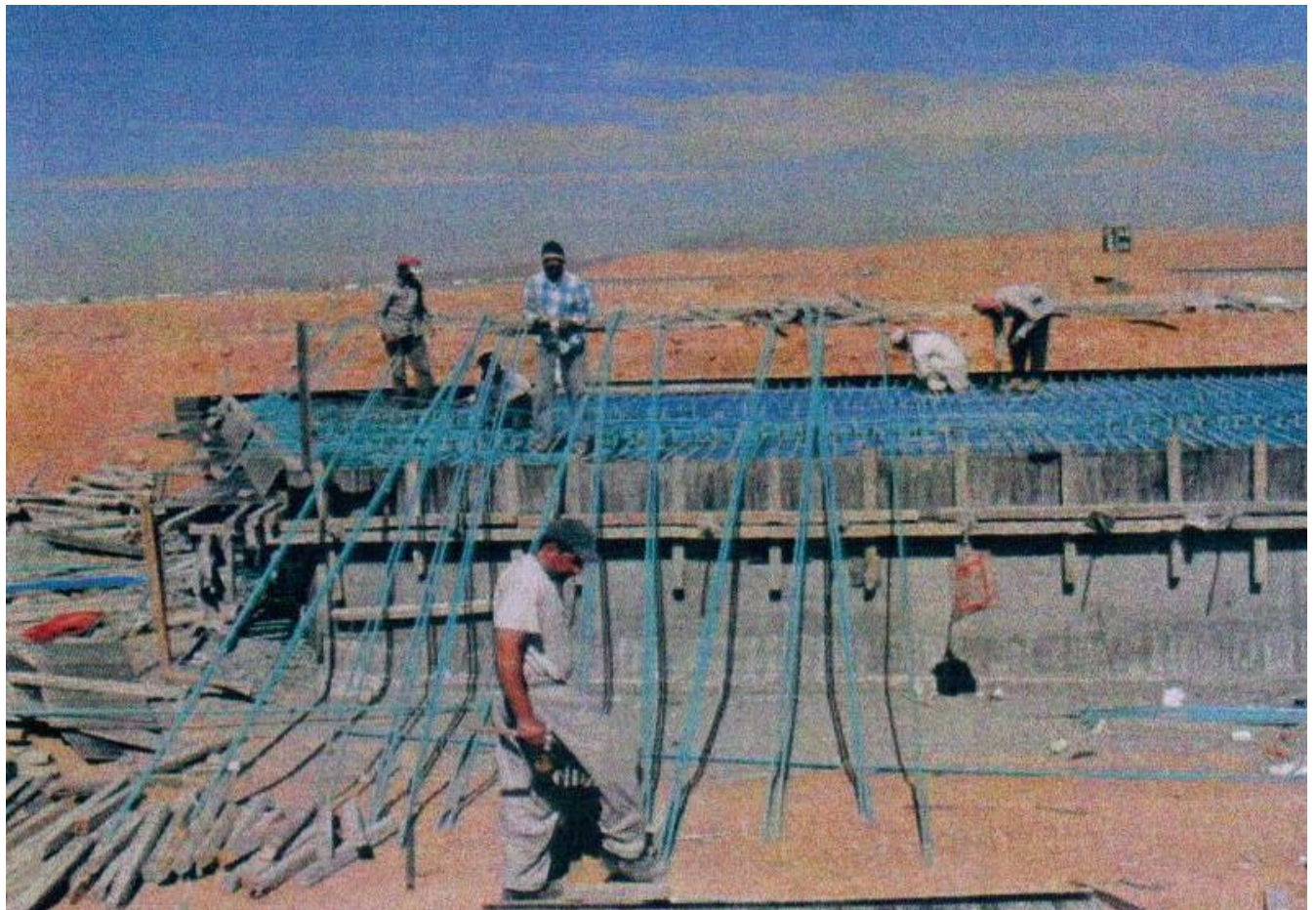


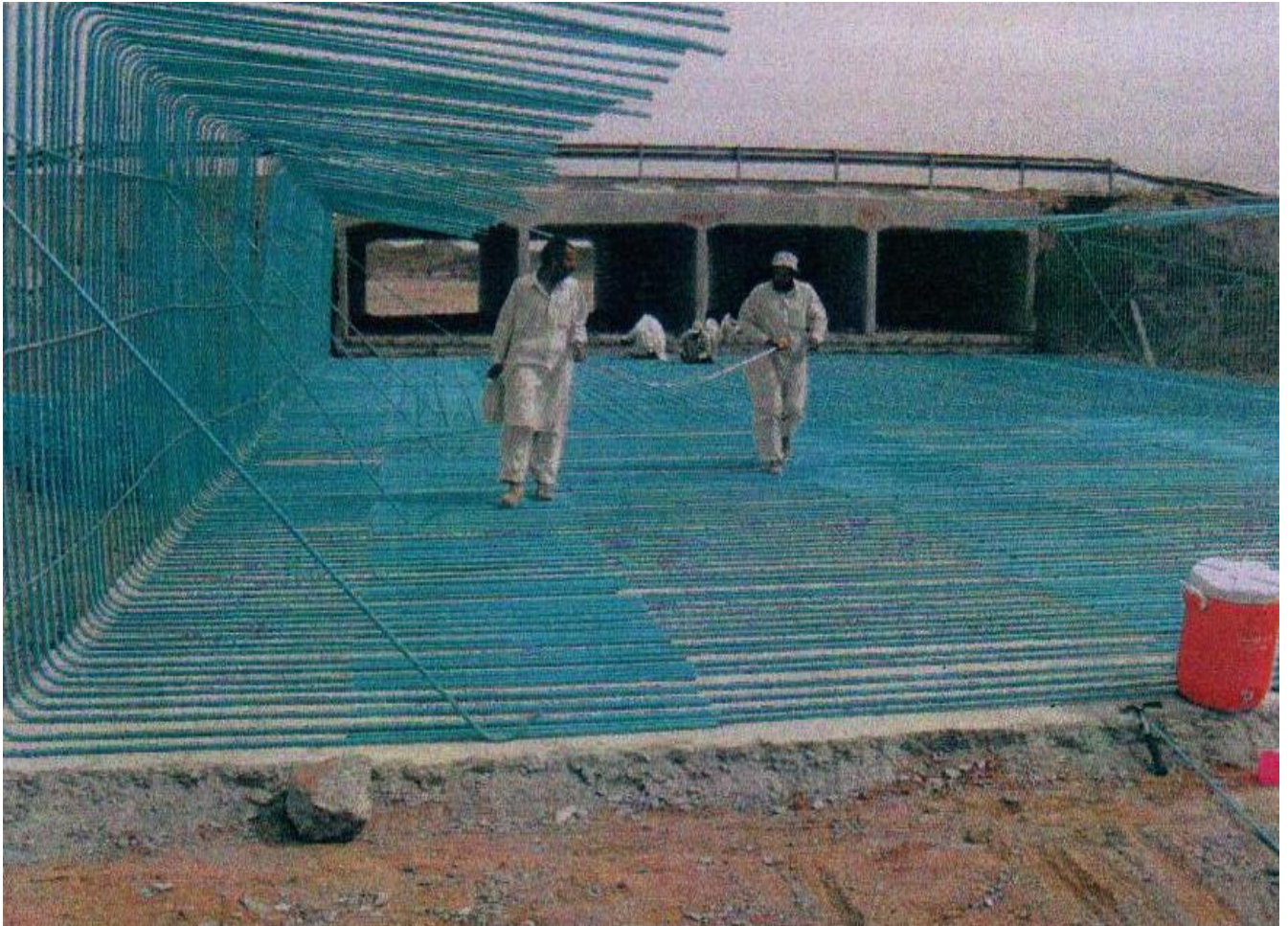


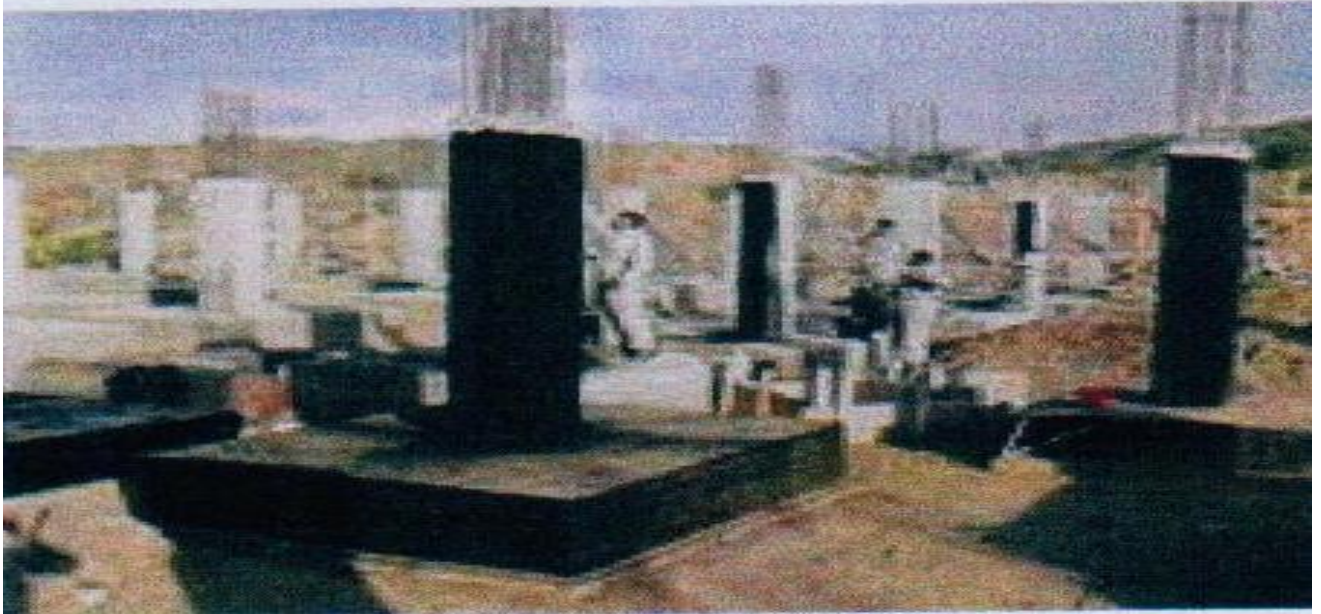
























Termination



Cable Tray









































